

**BEAUVOISE
GRAPHITE**
—
**CLAY
SLATE**



TECHNICAL SERVICES:

Quantity Estimating:

For a detailed roof material quantity schedule, please send us your project drawings in PDF format.

Fixing Specification:

BS 5534 states that all interlocking tiles must be mechanically fixed. Use Edilians' roof tile fixing calculation service to ensure your roof is designed & installed in accordance with BS 5534.

Roof Specifications:

We can write a detailed specification for your project based on the information you supply. This will include a wind load calculation to ensure your roof is designed & installed in accordance with BS 5534.

CAD Detailing:

CAD details are available on our website and also from FASTRACKCAD www.fastrackcad.com for all our tiles & for all common roof details. For bespoke details, please contact our Technical Support team.

MANUFACTURING STANDARDS

Edilians tiles fully comply with the requirements of BS EN 1304; the European Standard for clay tiles & fittings & are manufactured under a Quality Management system certified to comply with ISO 9001.

ENVIRONMENTAL STANDARDS

All Edilians manufacturing sites are certified to Environmental Management System ISO 14001. In addition, Edilians complies with BES 6001: Responsible Sourcing. Edilians has a corporate policy for sustainable development, with environmental & social implementation key components of its overall performance. Strict standards are set for its manufacturing plants for emission, water & waste management. Responsible environmental management is important to Edilians by restoration of the landscape. Creating valuable wildlife habitats and recreation of heathland areas & forestry.

INSTALLATION

All tiles, fittings & accessories should be installed in accordance with the recommendations given in BS 5534: the British Standard Code of practice for slating & tiling. Sitework should be carried out in accordance with BS 8000-6: the British Standard for workmanship on building sites. Contact Edilians Technical Support for projects where the rafter length exceeds 6 metres.

CONTROL OF CONDENSATION

Adequate provision to prevent potentially harmful roof space condensation must be provided. In general, this can be achieved by following the guidance in BS 5250, through a combination of measures, including low & high-level ventilation, vapour permeable or air & vapour underlays & well-sealed ceilings as defined in BS 9250. Contact Edilians technical Support for further information.



30 YEAR GUARANTEE

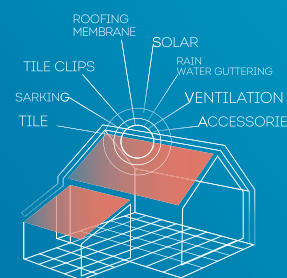
Edilians clay roof tiles are covered by a comprehensive 30-year guarantee of durability provided that they have been installed in accordance with BS 5534 & BS 8000-6.



Edilians is continually innovating and improving its products and services. Therefore, we reserve the right to change product specifications without notice. Please contact us for the latest information or visit www.edilians.co.uk



EDILIANS ROOF TILES
Site Industriel De Quincieux
BP47 - Z1 - 69650 Quincieux - France
Tel: 0161 928 4572
Fax: 0161 929 8513
Email: enquiries@rooftilesedilians.com



edilians.co.uk

01/2020

**BEAUVOISE
GRAPHITE**
—

CLAY SLATE

Small Format Interlocking Clay Slate
Ref. 312



edilians.co.uk

OUR SOLUTIONS

Roofing
Cladding
Sustainable

Uniclass	L5211
C1/SFB	(47), Ng2,



BEAUVOISE GRAPHITE

CLAY SLATE

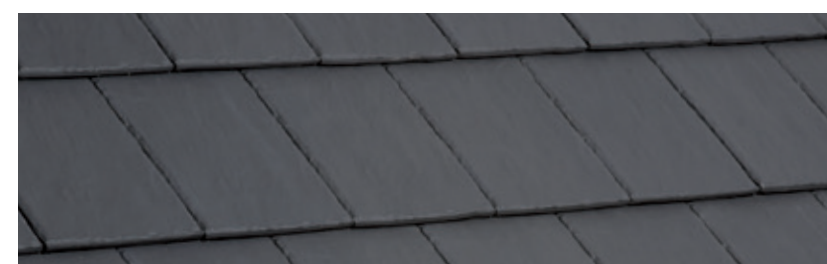
Small Format Interlocking Clay Slate

The Edilians Huguenot BEAUVOISE GRAPHITE clay slate provides an exciting natural clay option, offering a durable high-performance roof covering saving up to 30% on material costs alone when compared with natural slate. Reduced labour costs will also increase this differential considerably due to no on-site grading requirements. Each tile has two nail holes for ease of fixing when cutting or installing around hip and valley areas.

FEATURES

- Up to a 30% saving against natural slate
- Varied all round chamfered slim line edge
- Authentic modular slate size
- Minimum 22.5° roof pitch
- Low overall weight of 39kg per m²
- Insurance-backed 30-year durability guarantee

COLOUR



SLATE (011)

To overcome any minor shade variations inherent in the production of natural clay products, we recommend that tiles are mixed from at least 3 pallets on site. The colours shown here are only as accurate as allowed for by the printing process. Product samples are available on request.

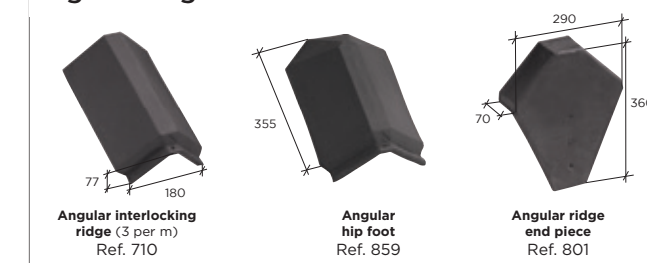
EDILIANS BEAUVOISE GRAPHITE ACCESSORIES AND FITTINGS

An extensive range of accessories covering all roofing needs

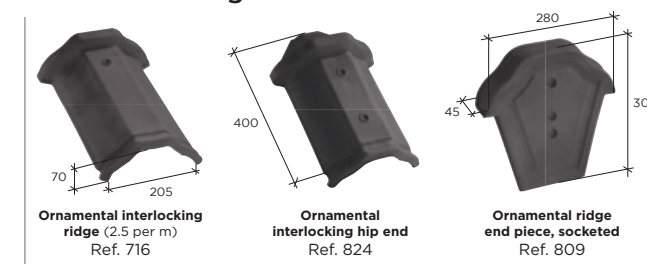
Verge



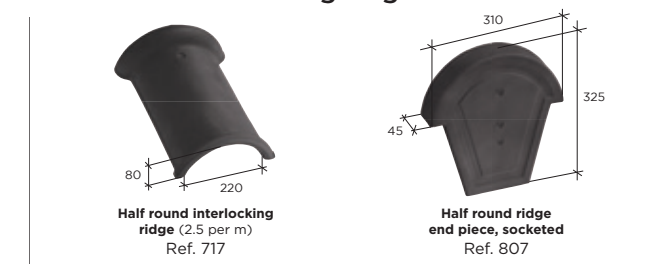
Angular ridge



Ornamental ridge



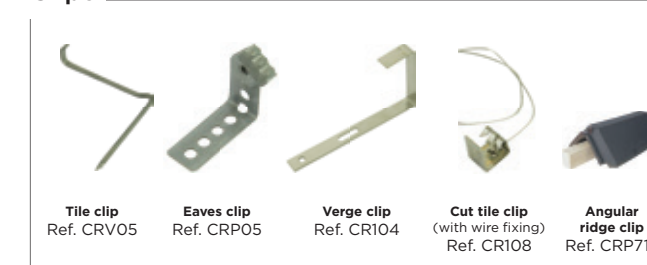
Half round interlocking ridge



Hip



Clips



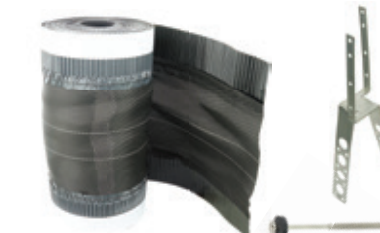
DRY FIX AND VENTILATION

Faster, cleaner, more effective solutions for all roofs



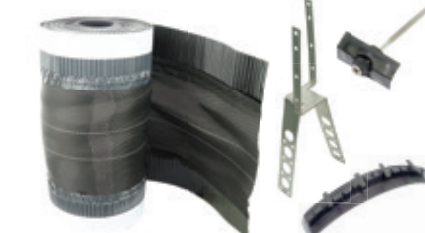
Plastic tile ventilators

Tile ventilator
(in line) 10,000mm²
All colour-matched to tiles



Dry fix system for interlocking ridges and hips

Components:
Ventilated ridge/hip roll
(6m x 300mm)
Batten fixing straps
100mm stainless steel screws



Dry fix system for non-interlocking ridges and hips

Components:
Ventilated ridge/hip roll
(6m x 300mm)
Universal sealing joint
with clamping plates
Batten fixing straps
100mm stainless steel screws

Note: Edilians does not currently supply dry fix or ventilation systems. However, suitable products, as shown above, are available from Edilians stockists.



Technical data

Quantity per pallet:
480 tiles

Coverage at 245mm gauge:
20.5 tiles per m²

Nominal batten gauge*:
245mm

Overall length:
322mm

Overall width:
235mm

Cover width:
200mm

Headlap:
77mm

Weight per tile:
1.9kg

Weight per m² at maximum gauge:
39.0kg

Minimum roof pitch:
22.5°

Batten coverage m²:
4.08m

Batten sizes:
38 x 25mm for rafter centres up to 450mm
50 x 25mm for rafter centres up to 600mm

Tile nail:
50 x 3.35mm
aluminium clout head

* Always check each batch of tiles delivered to site to determine the actual gauge, which may vary slightly due to drying and firing shrinkage during the manufacturing process