

RDUK

ROOFING DISTRIBUTION UK



ROOFING SUPPLY SPECIALISTS

www.roofingdistributionuk.com

RDUK

ROOFING DISTRIBUTION UK

Introducing Roofing Distribution UK, a dynamic addition to the Brickability Group PLC family.

With a robust foundation built on 25 years of experience within the UK roofing sector, RDUK emerges as the evolutionary successor to McCann Roofing Products, which was integrated into Brickability PLC in 2021.

Strategically headquartered in Strood, Rochester, we stand as premier importers and distributors of top-tier clay roof tiles, concrete tiles, natural and manmade slate. Our range spans products sourced from Edilians, Nelskamp, SVK, Gaelic and Envirotile.

We offer an extensive portfolio of roofing products, to meet all of your requirements. We work closely with Architects, Developers, Local Authorities, Housing Associations, Roofing Merchants, Builders Merchants, and Self Builders, among others.



RDUK source our inventory from Europe's largest producers, ensuring high quality and a dependable, reliable supply chain.

We pride ourselves on delivering a bespoke and personalised service, upholding strong partnerships with our suppliers to guarantee customer satisfaction.

Leveraging over two decades of industry experience, we enable our clients to access the finest roofing solutions, characterised by unmatched quality, consistency and enduring quality.

All products within comply with the relevant British Standards: BS5534 / BS5250 / BS8612.

FREE TILE SAMPLES

For general enquiries, including sample requests, please contact us at:

sales@roofingdistributionuk.com



CONTENTS

4 - 5: Edilians Phalempin 17 X 27

6 - 7: Edilians Ste Foy 17 X 27

8: Edilians Chartwell 17 X 27

9: Edilians Chilworth 17 X 27

10 - 11: Edilians 20x30

12: Edilians Beauvoise

13: Edilians Beauvoise Graphite

14 - 15: Edilians Double HP20

16 - 17: Edilians Panne S

18 - 19: Edilians Double Panne S

20 - 21: Edilians Panne H2

22 - 23: Edilians Monopole

24 - 25: Exmoor Concrete Tile

26 - 27: Exmoor Duo Concrete Tile

28 - 29: Wave Concrete Tile

30 - 31: Planum Concrete Tile

32 - 33: Planum Duo Concrete Tile

34 - 35: Double Pantile Concrete Tile

36 - 37: Double Roman Concrete Tile

38 - 39: Nelskamp GIO Low Pitch 10°

40 - 41: Nelskamp Wolds

42 - 43: Heritage Plain Clay Tiles

44 - 45: SVK Fibre Cement Slates

46 - 47: Gaelic Natural Slate

48 - 49: EnviroTile

50 - 51: Integrated Solar Tiles

52: Creasing Tiles

53: Vehicle Options / Service

54: Delivery Service

55 - 60: Tile Accessory & Fittings Index



A PART OF



IN PARTNERSHIP WITH:



EDILIANS PHALEMPIN 17 X 27



AMBER



RUSTIC RED



VAL DE SEINE



VINTAGE



VOLCANO



WEATHERED

- Beautiful traditional colours and textures
- Low 30° roof pitch guarantee
- Unique anti-capillary channels
- Comprehensive 30-year durability guarantee
- Natural Product (Silicone Free)
- Pre-mixed blend options
- Free Technical Support

Phalempin 17x27 is a true traditional clay plain tile in every aspect, with the added benefit of technically-advanced anti-capillary channels that ensure enhanced performance at roof pitches down to 30° and above. Phalempin clay plain tiles can be laid in vertical tile applications to create eye-catching decorative features, adding character to both new-build and refurbishment projects. The Phalempin range includes ornamental club and angle tiles for tile hanging.

Phalempin Millennium



A powerful tile: The Plain 17 x 27 Phalempin is produced at Phalempin in Artois.

Steeped in history: The Phalempin site has a long tradition of producing plain tiles. Phalempin's flagship tiles date back to 1860.

An ideal match: The wide range of unique colours has made these tiles very popular in traditional regions of south-east England.

High performance: The 17 x 27 is designed to guarantee optimum water-tightness both in new-build and restoration work.

Installation

All tiles, fittings & accessories should be installed in accordance with the recommendations given in BS5534: The British Standard Code of practice for slating & tiling. Site work should be carried out in accordance with BS 8000-6: The British Standard for workmanship on building sites. Contact RDUK for technical support including estimates and fixing specification.

Quantity per pallet:

1088 tiles

Coverage at 100mm gauge:

60 tiles per m²

Batten gauge (variable):

100mm roof / 115mm vertical

Overall length:

270mm

Overall width:

170mm

Minimum headlap at 100mm gauge:

70mm

Weight per tile:

1.1kg

Weight per m² at maximum gauge:

65.0kg

Minimum roof pitch:

30° *

Batten coverage m² at 100mm gauge:

10m

Batten sizes:

38x25mm for rafter centres up to 600mm

Tile nail:

38/40 x 2.65mm aluminium clout head

Phalempin Rustic Red



EDILIANS STE FOY 17 X 27

A hundred years of experience, using clays of the highest quality, give the STE FOY products a level of finesse. The technical qualities, particularly in terms of resistance to frost, bending and permeability are exceptional. Channels in these tiles ensure enhanced performance at roof pitches at 35° and above.

The variety of colours in the Ste Foy range offers a great richness of materials and shades. You can mix them as you wish so as to emphasise a particular look, or indeed create an effect of your own.

Quantity per pallet:

720 tiles

Coverage per m²:

60

Nominal gauge:

From 90mm to 100mm

Overall length:

272mm

Overall width:

170mm

Laid:

Broken bonded

Unit weight in Kg:

1.2

Tilery:

Ste Foy l'Argentière

Linear metres of battens per m² of roof:

From 10 ml

- New Millésime model with irregular hanging lengths
- Unique colour tones
- High-quality clays
- Natural Product (Silicone Free)
- Pre-mixed blend options
- Free Technical Support



ROUGE ETNA



MILLESIME



BROWN



CHEVREUSE



ROUGE NUANCE



TERRE DE BEAUCE



EDILIANS CHARTWELL

17 X 27

Quantity per pallet:

896 tiles

Coverage per m²:

60

Tile size:

270mm x 170mm

Nominal gauge:

100mm

Headlap (min):

70mm at 100mm gauge

Unit weight in Kg:

1.3

Weight:

77 Kg per m²

Minimum roof pitch:

35°

Batten coverage:

10m per m²

Recommended batten size:

25 x 38mm

Nail size:

38/40 x 2.65mm



HERMITAGE



MURROW

The Edilians Phalempin factory in Northern France produces some of their most popular clay roof tiles, namely their 17 x 27 and Chartwell plain tiles, as well as the fittings and accessories to match.

- The distressed, uneven surface gives the appearance of mature, seasoned hand-made tiles
- Ecologically friendly product with high residual value
- Comprehensive ventilation systems including the dry-fix option
- Full range of colour-matched accessories
- Comprehensive 30-year durability guarantee
- Natural product (Silicone Free)
- Free Technical Support

EDILIANS CHILWORTH 17 X 27

**Quantity per pallet:**

896 tiles

Coverage per m²:

60

Tile size:

270mm x 170mm

Nominal gauge:

100mm

Headlap (min):

70mm at 100mm gauge

Unit weight in Kg:

1.3

Weight:

77 Kg per m²

Minimum roof pitch:

35°

Batten coverage:

10m per m²

Recommended batten size:

25 x 38mm

Nail size:

38/40 x 2.65mm



VÉZÈRE

- A distressed surface and leading edge
- A format adapted for historic roofing
- Variable tile length
- Strong and durable
- Traditional Appearance
- Natural Product (Silicone Free)
- Free Technical Support

This manufacturing process uses 100% green energy. We use traditional firing techniques, with a wood fire, to create unrivalled blends of colours and hues within each batch. Tiles are fired at an average temperature of 1000° for 2 days, with subtle variations depending on the position of tiles within the kiln ensuring each tile is unique in shape and finish. With its Vézère colour, this new tile perfectly matches local English Heritage.

EDILIANS 20 X 30



ALEZANE



BURNT RED



GABARRE



PAYSAGE



QUERCY



WEATHERED



SLATE

- Excellent value for money
- Perfect for new build and renovation
- Discreetly shouldered cross-camber
- Unique anti-capillary channels
- Low pitch (30°) suitability
- Compatible with Edilians PVt Modules
- Natural Product (Silicone Free)
- 30 Year Guarantee

Available in seven attractive colours, the 20x30 offers installation cost savings over traditional premium concrete or clay plain tiles without compromising aesthetics. RDUK European manufacturing partners Edilians fully comply with the requirements of BS EN 1304; the European Standard for clay tiles & fittings & are manufactured under a Quality Management system certified to comply with ISO 9001.

Quantity per pallet:

660 tiles

Coverage:45 tiles per m²**Batten gauge:**

115mm roof

Overall length:

300mm

Overall width:

200mm

Minimum head lap at 115mm gauge:

70mm

Weight per tile:

1.6kg

Weight per m² at 100mm gauge:

69.6kg

Minimum roof pitch:

30.0° *

Batten coverage m²:8.7/m²**Batten sizes:**

38x25mm for rafter centres up to

600mm

Tile nail:

38/40 x 2.65mm aluminium clout head

* As tested at BRE. The minimum pitch of 30° is not suitable for a sprocket detail. For rafter lengths in excess of 6 metres please contact our Technical Department for guidance. Alezane, Paysage and Gabarre Colours are pre mixed blends.

**Textured Surface**

The surface of each tile has been created to reproduce an effect of natural embedded weathering.

Variable Hanging Length

An irregularity that is indispensable for the renovation of old roofs and homes of character. Two different lengths with 10mm variation to reproduce the effect of old reclaim or handmade tiles.

Resistance and Quality

The 20x30 is the only truly pressed tile available in the UK market in this unique economical size. Its exceptional transverse strength and durability is emphasised with a supporting 30-year comprehensive guarantee and complies with BS1304:2005 and ISO9001 quality assurance standards.

EDILIANS BEAUVOISE



BURNT RED

A small elegant interlocking clay plain tile with an attractive thin leading edge, the Beauvoise provides a cost-effective solution as an alternative to double lapped plain tiles. The Beauvoise is an innovative modern roof tile and has proved to be a natural choice for new-build and renovation projects. With maintenance-free dry fix ridge, hip and verge options, the Beauvoise is available in four distinctive and appealing colours.

- Reinforced waterproofing
- Refined profile
- Thin leading edge like traditional plain tiles
- Wide range of accessories
- Variable gauge
- A low 22.5° roof pitch



TERRE DE BEAUCE

The Beauvoise is a modern style-plain clay tile, its finesse, format and design offer good looks that are well suited to buildings both new and old. Its pure lines, its straight, slim front edge and its reduced thickness bring an unrivalled perfect plain tile look.

Manufacturing Standards

Edilians tiles fully comply with the requirements of BS EN 1304; the European Standard for clay tiles & fittings & are manufactured under a Quality Management system certified to comply with ISO 9001.



VALLE DE CHEVREUSE



SLATE



For tile accessories, refer to this page's number in the index (P55 - 60)

EDILIANS BEAUVOISE GRAPHITE

**Quantity per pallet:**

660 tiles

Coverage:45 tiles per m²**Batten gauge:**

115mm roof

Overall length:

300mm

Overall width:

200mm

Minimum head lap at 115mm gauge:

70mm

Weight per tile:

1.6kg

Weight per m² at 100mm gauge:

69.6kg

Minimum roof pitch:

30.0° *

Batten coverage m²:

8.7m

Batten sizes:

38x25mm for rafter centres up to 600mm

Tile nail:

38/40 x 2.65mm aluminium clout head

* As tested at BRE. The minimum pitch of 30° is not suitable for a sprocket detail. For rafter lengths in excess of 6 metres please contact our Technical Department for guidance. Alezane, Paysage and Gabarre Colours are pre mixed blends.

GRAPHITE

Manufacturing Standards

Edilians tiles fully comply with the requirements of BS EN 1304; the European Standard for clay tiles & fittings & are manufactured under a Quality Management system certified to comply with ISO 9001.

The Elegance of Slate, The Purity of Clay

The Beauvoise Graphite tile is a blend of the best of its origins: the historic clay of Beauvais and the sleek, polished look of slate. These small-format plain interlocking tiles are without a doubt a new classic in contemporary roof style.

The Charm of Slate

Increasingly used both in roofing and to dress the facades of cladding, the good looks of natural slate never fail to please. As a solutions specialist for roofs and facades, Edilians has extended its small mould range to offer a clay tile with the look of a natural slate.

The merits of the Beauvois tile

Made of Beauvais clay, the Beauvoise Graphite tile retains the pure lines and straight front edge of the Beauvoise Huguenot tile, whose mould was used in its design. With its slightly finer profile, slate grey colour and textured surface, it creates a perfect imitation of natural slate roofs, at a much lower cost per square metre, while retaining the undeniable advantages of clay roofing.



EDILIANS DOUBLE HP20

Quantity per pallet:

240 tiles

Coverage at 250mm gauge:

10 tiles per m²

Batten gauge (variable) *

225mm minimum - 250mm maximum

Overall length:

330mm

Overall width:

460mm

Cover width:

418mm

Minimum head lap:

80mm

Weight per tile:

4.3kg

Weight per m² at maximum gauge:

41.0kg

Minimum roof pitch:

17.5°

Batten coverage m² at 250mm gauge:

4.0m

Batten sizes:

38 x 25mm for rafter centres up to 450mm.

50 x 25mm for rafter centres up to 600mm

Tile nail:

50 x 3.35mm aluminium clout head

* Always check each batch of tiles delivered to site to determine the actual gauge, which may vary slightly due to drying and firing shrinkage during the manufacturing process.

- Innovative, economical design
- Tapered leading edge
- Variable gauge
- Natural Product (Silicone Free)
- 30-year durability guarantee
- Compatible with EDILIANS PV modules

A multi-purpose tile, The Double HP20 is a large format interlocking tile with a flat surface, produced at St Germer de Fly. This product whilst being large format has the appearance of a small module interlocking slate or tile coupled with low pitch suitability and is available in 4 striking colours.

Manufacturing Standards

Edilians tiles fully comply with the requirements of BS EN 1304; the European Standard for clay tiles & fittings & are manufactured under a Quality Management system certified to comply with ISO 9001.



HP20 BURNT RED



HP20 SLATE



HP20 TERRE DE BEAUCE



HP20 VALLEE DE CHEREUSE

Innovative

The Double HP20 is the result of combining two small-format tiles into a single tile. This major technical innovation offers both the good looks of small tiles and the rapid installation of large format tiles. This 2 in 1 tile is the result of different technical aspects which we judge to be indispensable to the installation and durability of a roof.

Ingenious

Once installed, the appearance of the Double HP20 is very similar to that of plain tiles. Made from Beauvais clays, it offers all the quality and durability of our interlocking tiles. Moreover, thanks to its side interlocks and its invisible outlets, it offers outstanding water tightness and can be installed at roof pitches as low as 17.5°.

Complete

A successful tile in its own right, the Double HP20 also owes its popularity to the wide range of accessories that cater for all your needs and requirements. Pediment, finials, verges, ridges etc. all combine to make the Double HP20 a roof that is attractive, effective and durable.

HP20 Burnt Red



HP20 Burnt Red



HP20 Slate



EDILIANS PANNE S



BURNT RED



NATURAL RED



RUSTIC RED



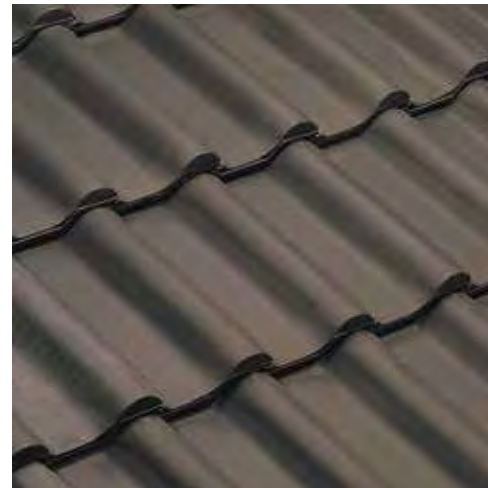
VIEUX NORD



OLD VINTAGE



SATIN BLACK



SLATE

- Attractive modular size
- Extensive range of colours
- Ideal for renovation and new build
- Compatible with EDILIANS PV Modules
- Natural Product (Silicone Free)
- 30 Year Guarantee

Made from durable Flemish clays, the PANNE S is available in seven mellow, enduring colours.

Manufacturing Standards:

Edilians tiles fully comply with the requirements of BS EN 1304; the European Standard for clay tiles & fittings & are manufactured under a Quality Management System certified to comply with ISO 9001.

Quantity per pallet:

420 tiles

Coverage:20 tiles per m²**Batten gauge*:**

275mm

Overall length:

342mm

Overall width:

232mm

Cover width:

190mm

Head lap:

64mm

Weight per tile:

2.3kg

Weight per m² at maximum gauge:

46kg

Minimum roof pitch:

22.5°

Batten coverage per m²:3.63m²**Batten sizes:**

38 x 25mm for rafter centres up to 450mm.

50 x 25 mm for rafter centres up to 600mm.

Tile nail:

50 x 3.35mm aluminium clout head

* Always check each batch of tiles delivered to site to determine the actual gauge, which may vary slightly due to drying and firing shrinkage during the manufacturing process

**A classic:**

It's a traditional Flemish Panne tile with a pleasing profile. Its good looks are typical of roofs in the North at Pas-de-Calais or the Somme, which had a major influence on roofing during the 18th century along the eastern coastline in the UK with "old English pantiles" which our single Panne S continues to emulate today.

Modern techniques

When developing new products, we always look to combine ease and rapidity of installation with a high level of water tightness which can be installed at roof pitches as low as 22.5°.

For new build and renovation

With an appropriate range of accessories, it will soon become a reference point for both new build and renovation. A large range of colours means it will fit perfectly into your surroundings. The range of accessories is also compatible with the related Double Panne S.

Installation

All tiles, fittings & accessories should be installed in accordance with the recommendations given in BS 5534: the British Standard Code of practice for slating & tiling. Site work should be carried out in accordance with BS 8000-6: the British Standard for workmanship on building sites. Contact Edilians Technical Support for projects where the rafter length exceeds 6 metres.

EDILIANS DOUBLE PANNE S

Traditional Classic Appearance with Economical Coverage Exceptionally quick and easy to install, the Double Panne S combines the traditional appearance of the Single Panne S with the economy and ease of a double tile.



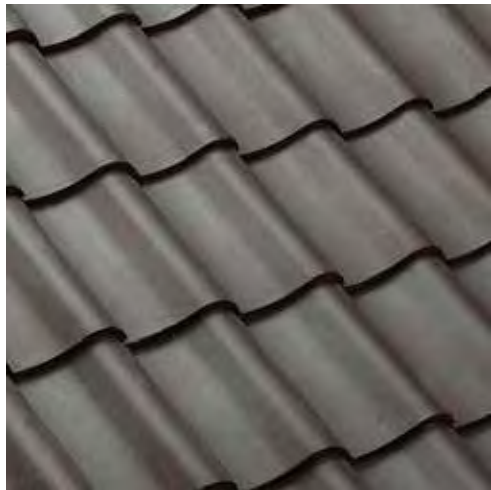
BURNT RED



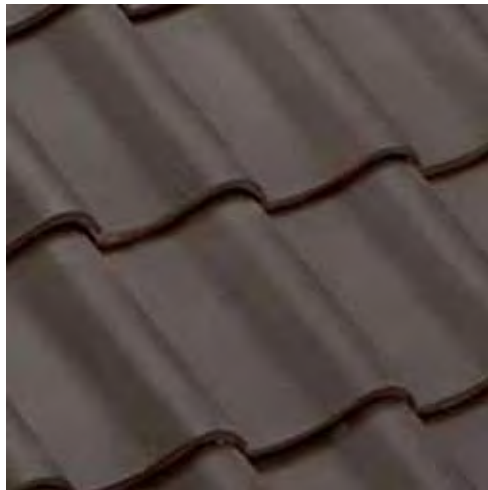
NATURAL RED



RUSTIC RED



SATIN BLACK



SLATE

- Economical 10m² coverage
- Low roof pitch suitability (17.5°)
- Quick and easy to install
- 30 Year durability guarantee
- Natural Product (Silicone Free)
- Compatible with EDILIANS PV modules

Quantity per pallet:

210 tiles

Coverage:

10 tiles per m²

Batten gauge*:

275mm

Overall length:

339mm

Overall width:

423mm

Cover width:

378mm

Minimum head lap:

64mm

Weight per tile:

4.3kg

Weight per m² at maximum gauge:

43kg

Minimum roof pitch:

17.5°

Batten coverage per m²:

3.63m

Batten sizes:

38 x 25mm for rafter centres up to 450mm.

50 x 25 mm for rafter centres up to 600mm.

Tile nail:

50 x 3.35mm aluminium clout head

* Always check each batch of tiles delivered to site to determine the actual gauge, which may vary slightly due to drying and firing shrinkage during the manufacturing process

Featuring discretely hidden weather bars, this appealing pantile offers a high level of performance whilst maintaining a traditional appearance. The Double Panne S is available in 5 stunning colours.

Manufacturing Standards

Edilians tiles fully comply with the requirements of BS EN 1304; the European Standard for clay tiles & fittings & are manufactured under a quality management system certified to comply with ISO 9001.

An innovative tile

Made at Wardrecques, this tile has an unrivalled installation time and very high-quality coatings.

Extra-wide

This 2 in 1 tile will improve your installation time considerably whilst retaining that regional appearance. This Double Panne S is from the same family as the Panne S with which it shares the same range of accessories.

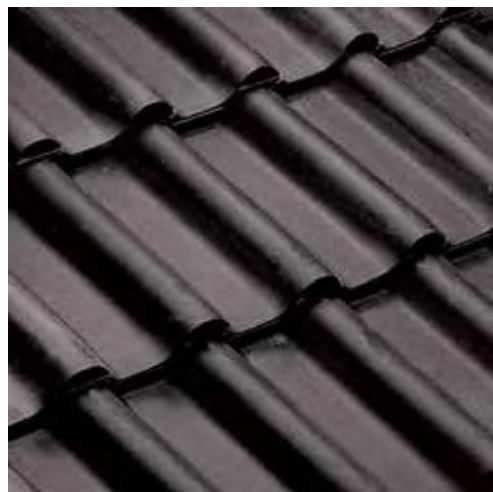
Proven strength

Particular attention has been paid to the choice of coatings in order to guarantee optimum resistance to impact.



EDILIANS PANNE H2

The Panne H2 Huguenot has long had its heartland in the North-East. Its curves have a look of European canal tiles, but the quality of its finish puts it in a different league.



BLACK GLOSS



BROWN



BURNT RED



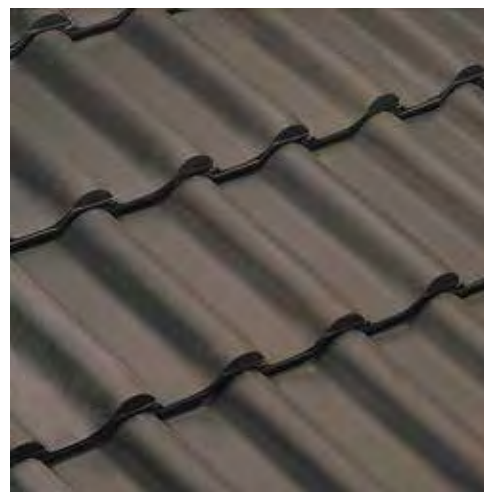
NATURAL RED



RUSTIC RED



SEMOIS



SLATE

- Attractive modular size
- Extensive range of colours
- Ideal for renovation and new build
- 30-year durability guarantee
- Compatible with EDILIANS PV Modules
- Guaranteed down to 17.5° roof pitch.

The Edilians PANNE H2 is a clay interlocking pantile produced at Pargny Sur Saulx in the Champagne region of France. This model, as with all produced by Edilians Roof Tiles, bears the hallmark of distinction of a world leader supported by technological excellence at all of its 13 manufacturing plants.

The PANNE H2 is a technically advanced traditional clay pantile that combines a beautiful, smooth surface with stunning good looks and outstanding performance on roof pitches as low as 17.5°. A change of colour gives the Panne H2 a different look. A natural red or rustic red can give a traditional look to renovation work. Alternatively, it can take on an avant-garde look in gloss black on a modern house.

Quantity per pallet:

288 tiles

Coverage:

14 tiles per m2

Batten gauge*:

360mm

Overall length:

432mm

Overall width:

255mm

Cover width:

197mm

Head lap:

56mm

Weight per tile:

3.2kg

Weight per m2 at maximum gauge:

45kg

Minimum roof pitch:

17.5°

Batten coverage per m2:

2.68m

Batten sizes:

38 x 25mm for rafter centres up to 450mm.

50 x 25 mm for rafter centres up to 600mm.

Tile nail:

50 x 3.35mm aluminium clout head

* Always check each batch of tiles delivered to site to determine the actual gauge, which may vary slightly due to drying and firing shrinkage during the manufacturing process



Burnt Red



Rustic Red



Semois



Slate

Manufacturing Standards

Edilians tiles fully comply with the requirements of BS EN 1304; the European Standard for clay tiles & fittings & are manufactured under a Quality Management system certified to comply with ISO 9001.

EDILIANS MONOPOLE



BURNT RED



NATURAL RED



NUANCE



RUSTIC RED



VIEUX NORD



WEATHERED



BLACK GLOSS

- Discreet modular size
- Wide range of attractive colours
- Ideal for new buildings and renovation
- 30-year durability guarantee at 25° minimum roof pitch
- Natural Product (Silicone Free)
- Compatible with EDILIANS PV Modules

Possessing a broad spectrum of colours, it will provide a perfect match with the local countryside. Replicating the style of the old houses around Boulogne, the "Vieux Nord" (Old North) colour will soon prove popular, particularly for renovation work, where its discreet and traditional style will fit in perfectly with the environment. Economical and versatile, the small modular size of the Monopole makes it ideal for a wide range of refurbishment and new build projects, offering impressive cost savings.

Quantity per pallet:

600 tiles

Coverage:22 tiles per m²**Nominal gauge:**

241mm

Overall length:

297mm

Overall width:

215mm

Working width:

189mm

Minimum head lap:

59mm

Weight per tile:

2kg

Weight per m²:

45kg

Minimum roof pitch:

25°

Batten coverage per m²:

4.15m/m

Batten sizes:

38 x 25mm for rafter centres up to 450mm.

50 x 25 mm for rafter centres up to 600mm.

Tile nail:

50 x 3.35mm aluminium clout head

* Always check each batch of tiles delivered to site to determine the actual gauge, which may vary slightly due to drying and firing shrinkage during the manufacturing process

Manufacturing Standards

Edilians tiles fully comply with the requirements of BS EN 1304; the European Standard for clay tiles & fittings & are manufactured under a Quality Management system certified to comply with ISO 9001.

The Panne H2 is a technically advanced traditional clay pantile that combines a beautiful, smooth surface with stunning good looks and outstanding performance on roof pitches as low as 17.5°. A change of colour gives the Panne H2 a quite different look. A natural red or rustic red can give a traditional look to renovation work. Alternatively, it can take on an avant-garde look in gloss black on a modern house.

Highly Recommended

The Monopole No1 Huguenot is made at Wardrecques in the north of France. It's a small format tile, with a slight camber and a roll.

Recommended for its quality

The Monopole No.1 Huguenot is highly recommended and thanks to the efficiency of the production site at Wardrecques, the level of finish is beyond reproach.



EXMOOR CONCRETE TILE

This large format tile features a traditional flat profile design with a sleek, 19mm thin leading edge, smooth appearance. A major benefit of the RDUK tileworks concrete tile is that it can be used on roof pitches as low as 17.5° although a 100mm headlap is required.



ANTHRACITE



GREY



RIVEN



BROWN



RED



RUSTIC

Size:

420mm x 334mm

Weight:

4.7kg

Minimum Pitch:

100mm headlap - 17.5° 75mm headlap - 22.5°

Cover Width:

305mm

Weight of Tiling:75mm headlap - 45kg/m²100mm headlap - 49kg/m²**Batten Size:**

50 x 25mm (rafters not exceeding 600mm c/c)

Tiles per Band:

38

Thickness:

19.5mm

Minimum Headlap:

75mm (normal exposure)

Maximum Gauge:

345mm

Covering Capacity:75mm headlap = 9.7 tiles/m²100mm headlap = 10.5 tiles/m²**Nail Size:**

40mm x 3.35mm - Aluminium Alloy

Tiles per Pallet:

228

Weight of Pallet:

1086kg

Full Load

24 Pallets

- Excellent price-quality ratio (they are significantly cheaper than clay roof tiles)
- Easy to install
- Flat concrete tiles are very suited for modern architecture
- High resistance to moisture
- Resistance to cracks and bending
- Wide range of tile and ridge colours
- Small ecological footprint (raw materials are plenty available with little energy required for the production)



RDUK Exmoor Tile is a modern yet characteristic concrete tile. The clean lines and variety of stylish colours provide you with a minimalistic finish whilst allowing you to achieve a unique finish on your roof. At the same time, these tiles are recognised for their incredible durability having undergone thorough testing and been made with proven manufacturing techniques.

These flat concrete tiles are laid broken bonded, made easy with their interlocking edge. The tile size is 420mm in length and 334mm in width with hassle-free installation, which is a great advantage and beneficial for the total cost per square metre.

These tiles are ideal for new construction or renovation projects. To compliment the tiles why not see our Apex Ridge Tile available in all colours to match perfect with your roof. RDUK tileworks concrete tiles have a coloured core, as a result of which small damages or saw cuts will barely catch the eye.

Tileworks Apex Ridge:**Size:**

457mm x 250mm

Weight:

5kg

Maximum Roof Pitch:

45°

Ridge Tiles per Pallet:

140



Please note all tiles and slates should be fixed in accordance with manufacturers' requirements and BS 5534.

EXMOOR DUO CONCRETE TILE

This large format tile features a traditional flat profile design with a sleek, 19mm thin leading edge, smooth appearance. A major benefit of the RDUK tileworks concrete tile is that it can be used on roof pitches as low as 17.5° although a 100mm headlap is required.



ANTHRACITE



GREY



RIVEN



BROWN



RED



RUSTIC

Size:

420mm x 334mm

Weight:

4.7kg

Minimum Pitch:

100mm headlap - 17.5° 75mm headlap - 22.5°

Cover Width:

305mm

Weight of Tiling:75mm headlap - 45kg/m²100mm headlap - 49kg/m²**Batten Size:**

50 x 25mm (rafters not exceeding 600mm c/c)

Tiles per Band:

38

Thickness:

19.5mm

Minimum Headlap:

75mm (normal exposure)

Maximum Gauge:

345mm

Covering Capacity:75mm headlap = 9.7 tiles/m²100mm headlap = 10.5 tiles/m²**Nail Size:**

40mm x 3.35mm - Aluminium Alloy

Tiles per Pallet:

228

Weight of Pallet:

1086kg

Full Load

24 Pallets

- Excellent price-quality ratio (they are significantly cheaper than clay roof tiles)
- Easy to install
- Flat concrete tiles are very suited for modern architecture
- High resistance to moisture
- Resistance to cracks and bending
- Great choice of tile and ridge colours
- Small ecological footprint (raw materials are plenty available with little energy required for the production)



RDUK Exmoor Duo Tile is a modern yet characteristic concrete tile. The clean lines and variety of stylish colours provide a minimalistic finish whilst allowing you to get a unique finish on your roof. At the same time, these tiles are recognised for their incredible durability having undergone tough testing and been made with proven manufacturing techniques.

These flat concrete tiles are laid quarter bonded, made easy with their interlocking edge. The tile size is 420mm in length and 334mm in width with hassle-free installation, which is a great advantage and beneficial for the total cost per square metre.

These tiles are ideal for new construction or renovation projects. To compliment the tiles why not see our Apex Ridge Tile available in all colours to match perfect with your roof. RDUK tileworks concrete tiles have a coloured core, as a result of which small damages or saw cuts will barely catch the eye.

Tileworks Apex Ridge:**Size:**

457mm x 250mm

Weight:

5kg

Maximum Roof Pitch:

45°

Ridge Tiles per Pallet:

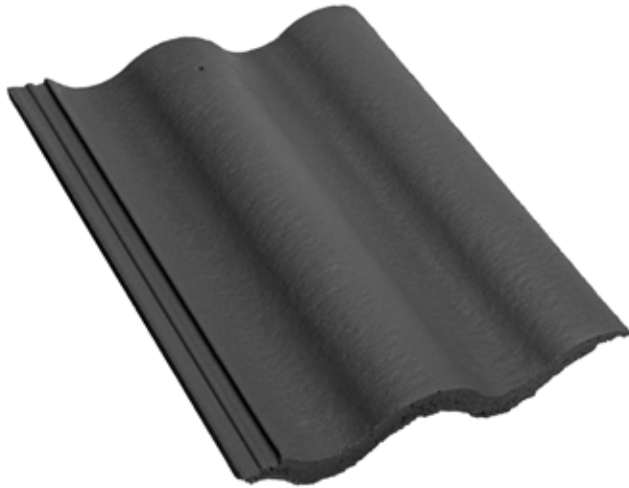
140



Please note all tiles and slates should be fixed in accordance with manufacturers' requirements and BS 5534.

WAVE CONCRETE TILE

This large format tile features a traditional flat profile design with a sleek smooth appearance. A major benefit of the RDUK tileworks concrete tile is that it can be used on roof pitches as low as 17.5° although a 100mm headlap is required.



ANTHRACITE



GREY



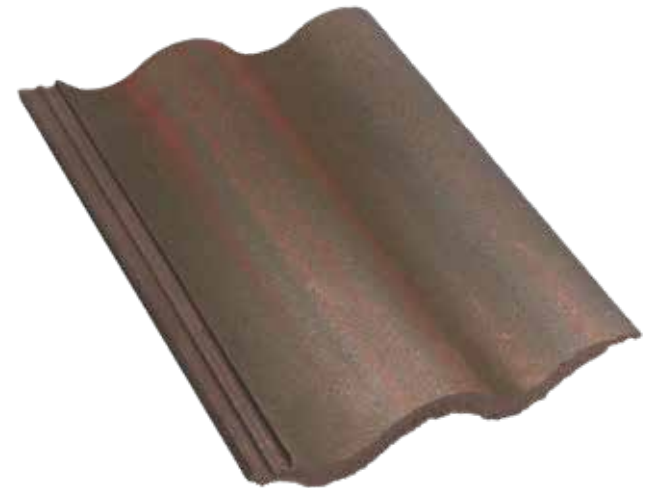
RED



BROWN



RUSTIC



HEATHER

Size:

420mm x 334mm

Weight:

4.5kg

Minimum Pitch:

100mm headlap - 17.5° 75mm headlap - 22.5°

Cover Width:

305mm

Weight of Tiling:75mm headlap - 47kg/m²100mm headlap - 51kg/m²**Batten Size:**

50 x 25mm (rafters not exceeding 600mm c/c)

Tiles per Band:

35

Thickness:

26mm

Minimum Headlap:

75mm (normal exposure)

Maximum Gauge:

345mm

Covering Capacity:75mm headlap = 9.8 tiles/m²100mm headlap = 10.6 tiles/m²**Nail Size:**

70mm x 3.35mm - Aluminium Alloy

Tiles per Pallet:

210

Weight of Pallet:

960kg

Full Load

24 Pallets

- Excellent price-quality ratio (they are significantly cheaper than clay roof tiles)
- Easy to install
- Flat concrete tiles are very suited for modern architecture
- High resistance to moisture
- Resistance to cracks and bending
- Great choice of tile and ridge colours
- Small ecological footprint (raw materials are plenty available with little energy required for the production)



The Wave Pantile offers a cost-effective option for all roofing projects, has an excellent price-quality ratio, and comes in six stunning colours.

The clean lines and variety of stylish colours provide a stylish finish whilst allowing you to get a unique look on your roof. At the same time, these tiles are recognised for their incredible durability having undergone thorough testing and been made with proven manufacturing techniques.

They are laid with a straight bond, which is made easy with their interlocking edge. Their high covering-capacity and hassle-free installation is a great advantage and beneficial for the total cost per square metre.

These tiles are ideal for new construction or renovation projects. To compliment the tiles we have our Apex Ridge Tiles available in all colours to match perfect with your roof. RDUK tileworks concrete tiles have a coloured core, as a result of which small damages or saw cuts will barely catch the eye.

Tileworks Apex Ridge:**Size:**

457mm x 250mm

Weight:

5kg

Maximum Roof Pitch:

45°

Ridge Tiles per Pallet:

140



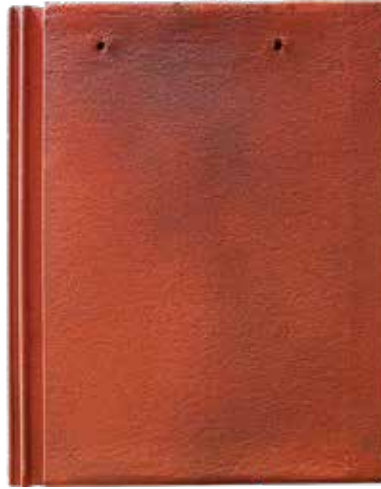
Please note all tiles and slates should be fixed in accordance with manufacturers' requirements and BS 5534.

PLANUM CONCRETE TILE

The *Planum concrete flat tiles work extremely well with both modern and traditional architecture and are available in six different colours and a wide range of special tiles and fittings.



CAYENNE RED



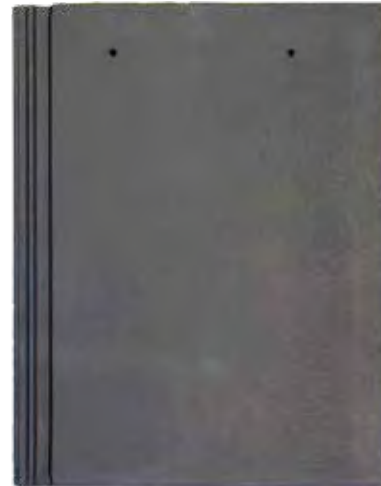
RUSTIC



DARK BROWN



SLATE GREY



ANTHRACITE GREY



ONYX BLACK

The Planum Concrete tile sets a new standard for flat tiles which everyone from Architects to Roofers and especially property owners will appreciate. Technically it is state of the art, it has an ultra-smooth flat finish and clean 'pore-free' edges to make the finished roof look superb. With a covering capacity of just 10 tiles per square metre, it makes the Planum Concrete flat tile the perfect choice for a very economical and attractive roof.

- Superior quality interlocking flat tile
- Ultra-Smooth Flat finish
- Long Life Concrete Technology
- Clean, Smooth 'Pore Free' Edges
- Economical - Only 10 tiles per m²
- Range of colours and quality fittings
- Faster, easy and secure installation
- Nelskamp 30 Year Guarantee

Manufactured to comply with the performance standards of EN490/491 and DIN Plus.

*As per European trademark Nr.7287956, filed on 2nd October 2008, the Trademark PLANUM belongs to La Escandella. It is Dachziegelwerke Nelskamp as authorized licensee of the owner allowed to use the mark PLANUM for its concrete product.

Length:

420mm

Width:

332mm

Gauge:

310 - 340mm

Headlap (min):

80mm (22.5° +)

100mm (17.5°+)

110mm (15°+)

Covering Width (mm):

300 ± 2.0

Minimum Roof Pitch:

15° @ 100m Head Lap

Number of Tiles Per m²:

9.8

Weight Per Tile:

5 kg

Weight Per m² (min):

50 kg

Battens Per m² (min):

3 - 3.2

Batten Size:

50 x 25 (600mm Centre)

Fixing Clips:

Eaves and Tile Clips

Nails - Ring Shank Aluminium Alloy:

45 x 3.35mm

Please Note: Fixing specs may vary due to roof pitch and location.

Low Pitch Roof Specification 17° - 15°:

- Lay Planum tiles broken bond.
- Headlap minimum 110mm.
- Use appropriate air and vapour permeable underlay, which does not require secondary roof ventilation.
- Lay the roof underlay to the manufacturer's instructions.
- Maximum rafter length 7.5m.
- All tiles are to be clipped with RDUK purpose-made tile clips, reference 409/202. Do not nail the tiles at 17° and below.
- Roof perimeters including, abutments and around roof windows must be securely fixed to BS 5534.

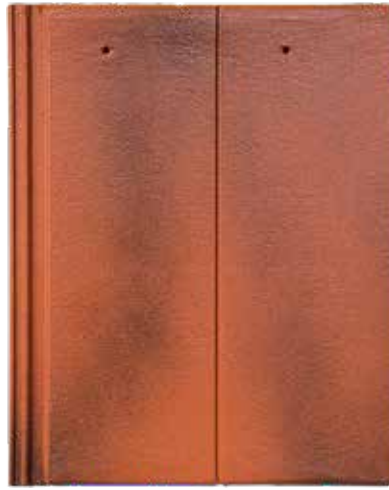


PLANUM DUO CONCRETE TILE

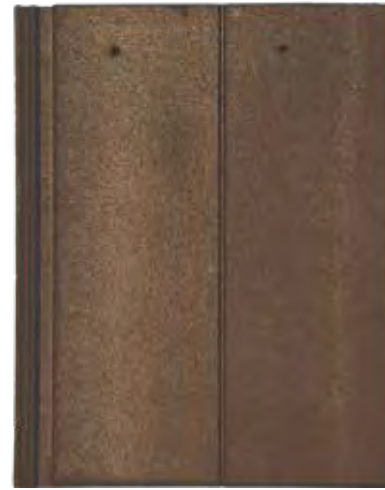
The *Planum Duo Concrete tile with its mock bond feature gives a realistic appearance of a smaller format roof tile while providing all the advantages of a large format concrete tile.



CAYENNE RED



RUSTIC



DARK BROWN



SLATE GREY



ANTHRACITE GREY



ONYX BLACK

Our *Planum Duo Concrete tiles like the *Planum concrete, are also available in six different colours and with a wide range of fittings. It's thin leading edge and a covering capacity of just 10 tiles per m² with a minimum roof pitch of 17.5° makes installation easy and economical. Laid quarter bonded the Duo gives a realistic appearance of a smaller format roof tile while providing all the advantages of a large format concrete tile. The *Planum Duo concrete establishes a new standard for flat tiles, which everyone from architects to roofers will appreciate. It has an ultra-smooth flat finish and clean 'pore-free' edges make the finished roof look stunning.

- Superior quality interlocking flat tile
- Ultra-Smooth Flat finish
- Long Life Concrete Technology
- Clean, Smooth 'Pore Free' Edges
- Economical - Only 10 tiles per m²
- Range of colours and quality fittings
- Faster, easy and secure installation
- Nelskamp 30 Year Guarantee

Manufactured to comply with the performance standards of EN490/491 and DIN Plus.

*As per European trademark Nr.7287956, filed on 2nd October 2008, the Trademark PLANUM belongs to La Escandella. It is Dachziegelwerke Nelskamp as authorized licensee of the owner allowed to use the mark PLANUM for its concrete product.

Length:

420mm

Width:

332mm

Gauge:

310 - 340mm

Headlap (min):

80mm (22.5° +)

100mm (17.5°+)

110mm (15°+)

Covering Width (mm):

300 ± 2.0

Minimum Roof Pitch:

15° with 100mm Head Lap

Number of Tiles Per m²:

10

Weight Per Tile:

5 kg

Weight Per m² (min):

50 kg

Battens Per m² (min):

3 - 3.2

Batten Size:

50 x 25 (600mm Centre)

Fixing Clips:

Eaves and Tile Clips

Nails - Ring Shank Aluminium Alloy:

45 x 3.35mm

Please Note: Fixing specs may vary due to roof pitch and location.

Low Pitch Roof Specification 17° - 15°:

- Lay Planum Duo tiles quarter bond.
- Headlap minimum 110mm.
- Use appropriate air and vapour permeable underlay, which does not require secondary roof ventilation.
- Lay the roof underlay to the manufacturer's instructions.
- Maximum rafter length 7.5m.
- All tiles are to be clipped with RDUK purpose-made tile clips, reference 409/202. Do not nail the tiles at 17° and below.
- Roof perimeters including, abutments and around roof windows must be securely fixed to BS 5534.



DOUBLE PANTILE CONCRETE TILE

The Double Pantile is a large format tile. A high-quality concrete tile that re-creates the flowing lines of a traditional pantile with an inherent strength in its 'S' shape design.



CAYENNE RED



RUSTIC



DARK BROWN



SLATE GREY



ANTHRACITE GREY



ONYX BLACK

The Nelskamp Double Pantile sets a new standard for tiles which everyone from Architects to Roofers appreciate. The Double Pantile is superbly crafted by our partners Nelskamp, with its flowing 'S' shape the design is perfectly enhanced by the smoother rounded edge which enhances the finished roof. With a covering capacity of just 10 tiles per square metre, it also makes the Double Pantile the perfect choice for a very economical and attractive roof.

The Double Pantiles are engineered to the highest of standards and are available in six different colours along with a wide range of fittings. From traditional clay pantiles to beautiful large formats and superbly crafted glazed tiles, we have an extensive choice of roofing materials all proven to enhance any type of project.

Revolutionary New Protective Finish

The Top-One finish is available on the Double Pantile. It offers a roof tile with micro concrete surface technology giving clean, smooth round trimmed edges. Its high quality and workmanship set new standards for concrete roof tiles. All our roof concrete tiles are guaranteed for 30 years, so whatever style and finish you choose, you have complete peace of mind.

Manufactured to comply with the performance standards of EN490/491 and DIN Plus.

*As per European trademark Nr.7287956, filed on 2nd October 2008, the Trademark PLANUM belongs to La Escandella. It is Dachziegelwerke Nelskamp as authorized licensee of the owner allowed to use the mark PLANUM for its concrete product.

Length:

420mm

Width:

332mm

Gauge:

310 - 345mm

Headlap (min):

75mm (22.5° +)

100mm (17.5°+)

110mm (15°+)

Covering Width (mm):

300 ± 2.0

Minimum Roof Pitch:

15° with 100mm Head Lap

Number of Tiles Per m²:

10

Weight Per Tile:

4.4 kg

Weight Per m² (min):

44 kg

Battens Per m² (min):

3 - 3.2

Batten Size:

50 x 25 (600mm Centre)

Fixing Clips:

Eaves and Tile Clips

Nails - Ring Shank Aluminium Alloy:

45 x 3.35mm

Please Note: Fixing specs may vary due to roof pitch and location.

Low Pitch Roof Specification 17° - 15°:

- Lay Double Pantile tiles straight bond.
- Headlap minimum 110mm.
- Use appropriate air and vapour permeable underlay, which does not require secondary roof ventilation.
- Lay the roof underlay to the manufacturer's instructions.
- Maximum rafter length 7.5m.
- All tiles are to be clipped with RDUK purpose-made tile clips, reference 409/202. Do not nail the tiles at 17° and below.
- Roof perimeters including, abutments and around roof windows must be securely fixed to BS 5534.

- Superior Quality Double Pantile
- Micro Concrete Surface Technology
- Cleaner, Smooth Round Trimmed Edges
- Economical - Only 9.7 tiles per m²
- Range of colours and quality fittings
- Faster, easy and secure installation
- Nelskamp 30 Year Guarantee



Cayenne Red / Slate Grey



Dark Brown



Onyx Black



Rustic



Cayenne Red

DOUBLE ROMAN CONCRETE TILE

These Double Roman concrete tiles are engineered to the highest of standards. A long-established Roman design popular in most regions and ideal for any type of project.



CAYENNE RED



RUSTIC



DARK BROWN



SLATE GREY



ANTHRACITE GREY



ONYX BLACK

Manufactured to comply with the performance standards of EN490/491 and DIN Plus.

The RDUK Double Roman tile sets a new standard for this profile which everyone from Architects to Roofers appreciate. The Double Roman is superbly crafted by our partners Nelskamp, with its classic, timeless shape and the design which is perfectly enhanced by the smoother rounded edge which enhances the finished roof. With a covering capacity of just 9.7 tiles per square metre, it also makes the Double Roman the perfect choice for a very economical and attractive roof. These Double Roman tiles are engineered to the highest of standards and are available in six different colours along with a wide range of fittings.

From traditional clay pantiles to beautiful large formats and superbly crafted glazed tiles we have a very wide choice of roofing materials all proven to enhance any type of project.

Revolutionary New Protective Finish

The Top-One finish is available on the Double Pantile. It offers a roof tile with micro concrete surface technology giving clean, smooth round trimmed edges. Its high quality and workmanship set new standards for concrete roof tiles. All our roof concrete tiles are guaranteed for 30 years, so whatever style and finish you choose, you have complete peace of mind.

*As per European trademark Nr.7287956, filed on 2nd October 2008, the Trademark PLANUM belongs to La Escandella. It is Dachziegelwerke Nelskamp as authorized licensee of the owner allowed to use the mark PLANUM for its concrete product.

Length:

420mm

Width:

332mm

Gauge:

310 - 345mm

Headlap (min):

75mm (22.5° +)

100mm (17.5°+)

110mm (15°+)

Covering Width (mm):

300 ± 2.0

Minimum Roof Pitch:

15° @ 100mm Head Lap

Number of Tiles Per m2:

10

Weight Per Tile:

4.4 kg

Weight Per m2 (min):

44 kg

Battens Per m2 (min):

3 - 3.2

Batten Size:

50 x 25 (600mm Centre)

Fixing Clips:

Eaves and Tile Clips

Nails - Ring Shank Aluminium Alloy:

45 x 3.35mm

Please Note: Fixing specs may vary due to roof pitch and location.

Low Pitch Roof Specification 17° - 15°:

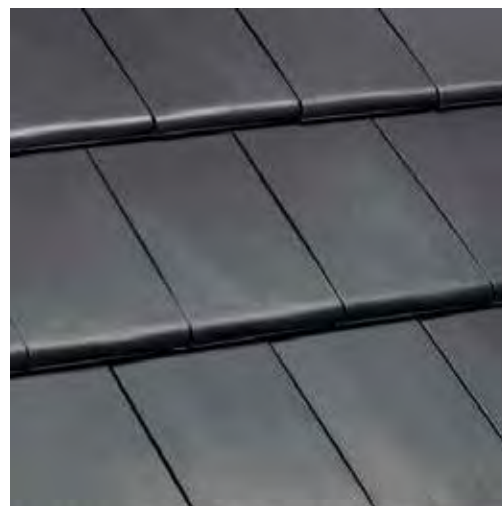
- Lay Double Roman tiles broken bond.
- Headlap minimum 110mm.
- Use appropriate air and vapour permeable underlay, which does not require secondary roof ventilation.
- Lay the roof underlay to the manufacturer's instructions.
- Maximum rafter length 7.5m.
- All tiles are to be clipped with RDUK purpose-made tile clips, reference 409/202. Do not nail the tiles at 17° and below.
- Roof perimeters including, abutments and around roof windows must be securely fixed to BS 5534.

- Superior Quality Double Roman
- Ultra-Smooth Flat finish
- Micro Concrete Surface Technology
- Cleaner, Smooth Round Trimmed Edges
- Economical - Only 9.7 tiles per m2
- Range of colours and quality fittings
- Faster, easy & secure installation



NELSKAMP G10 LOW PITCH (10°)

These tiles are superbly engineered and designed for a quick, easy and secure installation and are ideal for use with low-pitch roofs (minimum 10°). The G10 can also be used for vertical cladding on walls and facades.



RED BROWN

SLATE GREY

MATT BLACK

SOLAR TILE

With a covering capacity of only 10 tiles per square metre, this allows the G10 Flat Clay Roof Tile to be installed very economically. The G10 is an ideal tile for low-pitch roofs and can even be used as a cost-effective alternative to vertical cladding systems. Like all RDUK tiles, the G10 flat clay roofing tile is available in a range of colours and finishes together with a wide range of fittings.

- High-quality flat clay roofing tile
- Ideal for low-pitch roof
- Minimum roof pitch 10°
- Long-term durability
- Eco friendly
- Low maintenance
- Economical
- Wide range of colours & fittings
- Only 10 tiles per m²
- Fast, easy & secure installation

As the G10 is the perfect flat tile for low-pitch roofs, we recommend that these fixing practices are followed:

Low roof pitches 17°-10°

1. Use appropriate air and vapour permeable underlay, which does not require secondary roof ventilation.
2. Lay the roof underlay to the manufacturer's instructions.
3. Lay G10 tiles broken bond.
4. Headlap minimum 100mm.
5. Maximum rafter length 6m.
6. All tiles are to be clipped with purpose-made tile clips, reference 409/215.
7. Left Hand Verge tiles are to be fixed with a 45mm tile fixing screw with a neoprene washer, also fix verge clips if mortar bedding the verge.
8. Roof perimeters including around roof windows must be securely fixed to BS 5534.

All areas around the roof perimeter and abutments must be properly finished as well as any areas around any 'velux type' windows. (These are the areas where potential problems will likely occur on a low roof pitch.)

Manufactured to comply with the requirements of EN1304 European Standard for Clay Roof Tiles

G10 PV Solar System

The RDUK integrated (SPV) solar tile modules are installed at the same time as the roof ensuring complete synergy between the roof tile and solar panel.

The Aesthetic Energy System The seamless solar roof tiles are both a roof covering and electricity generating solution and are virtually invisible with subtle attractive looks.

Features Include:

- Modules interlock with the G10 roof tile
- Delivered as a ready-to-install unit
- Hanging nib and side interlock for swift, easy and secure laying
- Only 3 screws per module
- 20mm variable cover length
- Ca. 5.3m² roof area per kWp
- Product Guarantee: 10 years
- Performance guarantee:
- 10 years 90 % of rated performance
- 25 years 80 % of rated performance

**Length:**

486mm

Width:

296mm

Gauge:

384 mm to 404mm

Covering Width:

250 mm ± 1.0 mm

Minimum pitch:

10°

Number of tiles per m²:

10

Weight per tile:

4.6 kg

Weight per m² (min.):

45.54 kg

Battens required per m² (min):

2.5/m²

Batten size (mm):

50 x 25

Fixing:

Clipped

NELSKAMP WOLDS

This classically shaped pantile is manufactured to the highest standards using only the best raw materials. The most modern technologies in production facilities ensure that this profile is precise in its shape, enabling a very high quality finish to any roof. With a covering capacity of only 16 tiles per square metre, this also makes it a very economical pantile. Available in an attractive range of colours and finishes with a comprehensive range of fittings, including double roll and cloaked verge tiles.

The Wolds pantile is yet another example from our clay tile portfolio that are proving to be an inspired choice especially when used with traditional styles of architecture as well as renovation works.



BLUE REDUCED



MATT BLACK



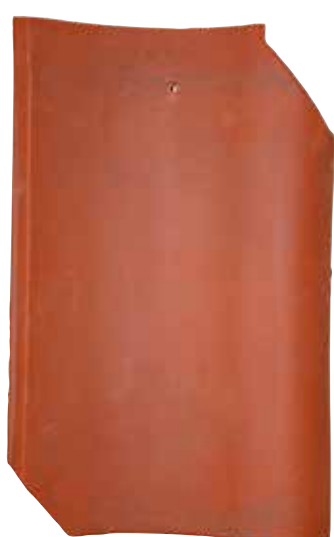
HERITAGE



TOSCANA



NATURAL RED



CLASSIC (BLEND OF THREE TILES)



Length:

393 mm

Width:

245 mm

Gauge:

321.5 mm ± 1.5 mm

Covering Width:

195 mm ± 2.0 mm

Minimum roof pitch:

22.5°

Number of tiles per m²:

16/m²

Weight per tile:

2.5 kg

Weight per m² (min.):

41.3 kg

Battens required per m² (min.):

3.4

Batten size (mm):

50 x 25

All tiles must be fixed.

To overcome any minor shade variations inherent in the production of natural clay products, we recommend that tiles are mixed from at least 3 pallets on site. The colours shown here are only as accurate as allowed for by the printing process. Product samples are available on request.



Classic



Classic

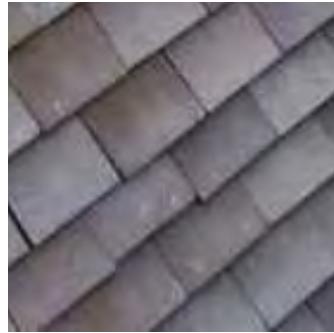


Classic

HERITAGE PLAIN CLAY TILES



CLAYHALL BIRCHWOOD



CLAYHALL DARK



CLAYHALL HAMLET



CLAYHALL MEDIUM



CLAYHALL RED

The Clayhall range has been carefully designed with a continuous nib feature that makes it flexible for both main roof and vertical tiling. These dark, medium or red rustic tones in natural textures have outstanding hand-crafted characteristics with the look of traditional handmade clay tiles.

If you seek to make a bespoke statement, Heritage Clayhall blends can be made by mixing colours to create a unique roof.



CONSERVATION BLACK



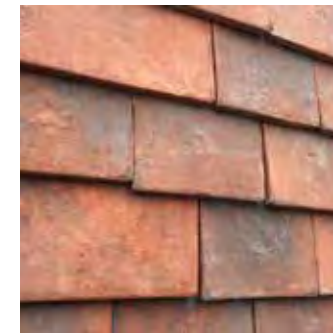
CONSERVATION DARK



CONSERVATION PEG TILES



CONSERVATION RED



CONSERVATION WEATHERED



CLASSIC EDWARDIAN

The Conservation range are available in a range of distinctive colours, created by using a very fine sand. Manufactured using high quality clay, achieving high strength and durability properties. The range comes with a complete set of associated fittings, including Hogg's Back Ridge, Half Round Ridge, Bonnet Hips, Valley tiles and External Angles.



Clayhall Birchwood



Conservation Red



Conservation Weathered



Clayhall Dark

Description	Roof	Vertical
Minimum Roof Pitch	35°	75°
Headlap (Minimum)	65mm	38mm
Batten spacing at maximum gauge	100mm	114mm
Size of tile	265 x 165mm	265 x 165mm
Covering Capacity	60 per m ²	53 per m ²
Cover width	165mm	165mm
Weight as laid	kg per m ²	58kg per m ²
Battens per M ²	10m	8.7m
Batten Size	38 x 25mm	38 x 25mm
Recommended nail type	40 x 2.65mm Alloy clout	40 x 2.65mm Alloy clout



Conservation Dark



Clayhall Hamlet



Clayhall Medium



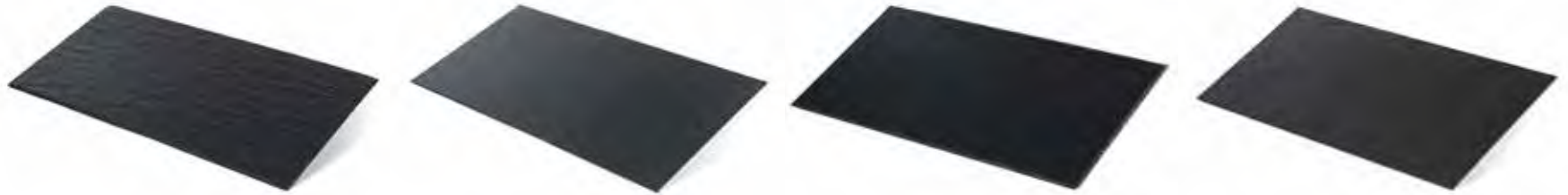
Clayhall Red



Classic Edwardian

SVK FIBRE CEMENT SLATES

SVK slates are composed of a homogeneous mixture of Portland cement, selected reinforcement fibres of superior quality, additives and water.



	MONTANA TEXTURED	MONTANA SMOOTH	ARDONIT SMOOTH	ARDONIT TEXTURED
FINISH	Textured surface with dressed edges	Smooth surface with dressed edges	Smooth surface with squared edges	Textured surface with squared edges
SIZE(mm)	600 X 300mm 600 X 600 mm	600 X 300mm 600 X 600 mm	600 X 300mm 600 X 600 mm	600 X 300mm 600 X 600 mm
WEIGHT (kg per m ² laid)*	20.13 kg	20.13kg	20.13kg	20.13kg
GROSS WEIGHT (kg per pallet)	1650kg	1650kg	1650kg	1650kg
N° PER PALLET	1080 pieces	1080 pieces	1080 pieces	1080 pieces
COLOUR	Blue-black (336) & Welsh blue (347)	Blue-black (336)	Blue-black (336) & Premium black (333)	Blue-black (336)
N° SLATES PER m ²	13.16	13.16	13.16	13.16
HEADLAP (mm)*	100	100	100	100
BATTEN GAUGE*(mm)	250	250	250	250
BATTENS (m per m ²) *	4	4	4	4
RIDGES (90°, 105°, 120°, 135°)	●	●	●	●

*These are data for roof pitches with moderate exposure (<56.5 l/m² per spell - rafter length ≤9m): standard roof pitch 25°
 For following roof pitches please contact us for the execution details:
 (<56.5 l/m² per spell - rafter length ≤9m): standard roof pitch 25°
 (<56.5 l/m² per spell - rafter length ≤6m): standard roof pitch 25°

Strongest Slates

SVK slates are the strongest slates available on the market. No other slate comes close to our values concerning bending strength. This is achieved because SVK exclusively use and source fibres of the best quality and because our fibre cement is double pressed.

Extremely Durable

Our slates are extremely durable. The water absorption of our slates is, on average, half the value of other manufacturers. SVK is the only manufacturer who applies a double paint coat on the front side and the edges of the slates. This low water absorption enhances the durability of the slates, it is out of the question that they would suffer frost damage.

High-Quality Painting

The quality of the paint coat on our slates is unequalled. SVK has more than 70 years of experience in preparation and application of paint. Furthermore, SVK invested in the installation of the most modern paint line in Europe. This technical leap enables SVK to produce slates with an extraordinary high UV-resistance, a super smooth surface where moss doesn't attach and an unequalled paint adhesion.



Dimensional stability:

SVK slates offer structural consistency, requiring no preliminary grading before fixing. This combined with their ease of installation results in considerable savings in time and associated costs on site.

Light weight:

Due to their light weight, SVK slates do not require a heavy load bearing roof construction, which means less timber is required for the structure.

Easy to handle and work with:

The strength and stability of SVK slates make them resistant to breakage and very easy to work with on site. SVK slates are strapped in easy to handle bundles.

Moss-inhibiting constituents:

In order to prevent moss growth, special moss-inhibiting constituents are added to the double coating.

Environmentally Friendly:

At SVK we take our environmental responsibilities seriously. Along with using organic fibres, SVK slates are also coated with a high-quality and durable acrylic paint, which is water-based.



GAELIC NATURAL SLATE

Natural Slate with a non-carbonated slate of tectonic compression with smooth formats. All our products are independently tested for compliance to BS EN 12326. Gaelic Pizarras was incorporated in 2015 to focus the resources and production of the three established producers in the Galicia region of north-west Spain.



GAELIC VIANA 50X25 VEGA

Roofing Distribution UK (RDUK) have a strong working relationship with Gaelic Pizarras which have been built through mutual respect and trust over many years. Gaelic is a substantial company within the industry producing a comprehensive range of products for those who require a reliable and substantial supply of high-quality natural slate. We co-ordinate our production to customers' requirements to ensure continuity of supply and quality.

All our products are independently tested for compliance to BS EN 12326.

These Slates is fully compliant with European standard BS EN 12326-1, achieving the highest rating A1, T1 and S1.

Release of dangerous substances:

None in conditions of use as roofing or external cladding



GAELIC VIANA 50X25 BEST

External Fire Performance:

Complies Class A Roof

Reaction to fire:

Complies Class A1

Suitable use:

DAPc Complies (ISO14025)

Slate:

Non-carbonated slate of tectonic compression, smooth formats.

Dimensional Tolerances:

Individual thickness and variation in relation to normal: 5mm +35%.

Deviation from declared length and width:

complies.

Deviation from straightness of edges:

complies.

Deviation from squareness:

complies.

Strength:

Transverse: 40.9 N/mm²

Longitudinal: 39.2 N/mm²

Performance:

Water absorption: 0.33% Class A1

Freeze-thaw Resistance: not required

Thermal Cycle: T1

Exposure SO₂: S1

Non-Carbonate carbon content: 0.3% (< 2%)

Carbonate content: 0.2% Complies

Best



Best



Best



Best



Vega



ENVIRO TILE

Envirotile are a flat, precision-manufactured, recycled polymer, lightweight roof tile with excellent green credentials.

Envirotile is a revolutionary, lightweight, interlocking roof tile system. Its technical design and helps promote better working conditions for roofers by minimising risk and conforming to the Health & Safety at Work Policy. Being only 20% of the weight of a concrete tile, Envirotile reduces carrying load weights and the unique polymer material (made from 75% recycled product) means there's no dust during cutting. Envirotiles also assist with improved foot grip whilst traversing the covered tiled roof - and they're virtually unbreakable.

Produced in two finish effect options - our original tile with a smooth finish and our latest addition of the slate-effect finish. Extremely simple to fix whilst performing exceptionally, locking into adjacent tiles to form a fully integrated roof covering. Envirotile performs to roof pitches as low as 12.5 degrees and actually helps to reduce build and labour costs.

ORIGINAL TEXTURE:



TERRACOTTA



DARK BROWN



SLATE GREY



ANTHRACITE GREY

SLATE TEXTURE:



ANTHRACITE GREY



ANTHRACITE BLACK

BENEFITS OF ENVIRO TILE:



SAVE TIME, SAVE MONEY



Lightweight and easy to install



Textured or slate-effect finish



Less tiles per roof



More secure with unique fitting system



Can be installed to a minimum 12.5 ° pitch



25-year guarantee for peace of mind

The Envirotile range of products have the following key benefits:

- BBA Certified
- Conforms to BS 5534:2014
- Greenspec Endorsed
- Quick installation requiring minimal skilled labour
- Lightweight roof covering system - less than 8 kilos per m coverage
- Envirotile is 80% lighter than concrete roof tile
- No harmful dust created during the cutting process
- Complete dry fix system - no cement needed
- Proven and tested at a low degree pitch of 12.5° against wind driven rain
- Weather tested to 147mph wind loads
- Improved grip surface
- Virtually unbreakable
- Anti-fungal properties
- Low maintenance
- UK manufactured
- Ridge products available
- Fully recyclable, manufactured from recycled plastics
- 25 Year Guarantee



Terracotta Original Texture



INTEGRATED SOLAR TILES

Roofing Distribution UK Solar Energy Roof Tiles are engineered to fit quickly and easily with your roof tiles, giving an almost seamless, attractive finish to your completed roof with the benefits of an instant clean efficient energy supply.

BLACK SOLAR TILE



Planum Concrete Roof Tiles and Integrated Solar Systems

RDUK solar energy roof tiles fit with our *Planum concrete interlocking flat tiles, blending so seamlessly that they are almost unnoticeable.

Double Pantile Concrete Roof Tiles and Integrated Solar Systems

RDUK solar energy roof tiles also fit seamlessly with our Double Pantile concrete interlocking tiles.

RED SOLAR TILE



New Planum Red PV Solar Tile

Roofing Distribution UK is delighted to supply a new Red PV Solar Tile which matches and interlocks perfectly with our Cayenne Red Concrete Roof Tile. The panels offer all the same qualities as the black modules with beautiful aesthetic to the completed roof. For further details download the PDF data card.

*As per European trademark Nr.7287956, filed on 2nd October 2008, the Trademark PLANUM belongs to La Escandella. It is Dachziegelwerke Nelskamp as authorized licensee of the owner allowed to use the mark PLANUM for its concrete product.

Long lifespan

The *Planum solar tiles are made from high-quality materials which have been specially selected and tested for this product. They are designed to have a lifespan of at least 25 years. The roof tiles themselves come with a 30-year guarantee.

Affordable

Simple and quick assembly makes the *Planum PV solar tiles ideal for new construction and renovation projects.

Value of your home

Solar energy does add value to your home. The beautiful aesthetics of our *Planum solar tiles increases this further. A nice thought if you come to sell your home!

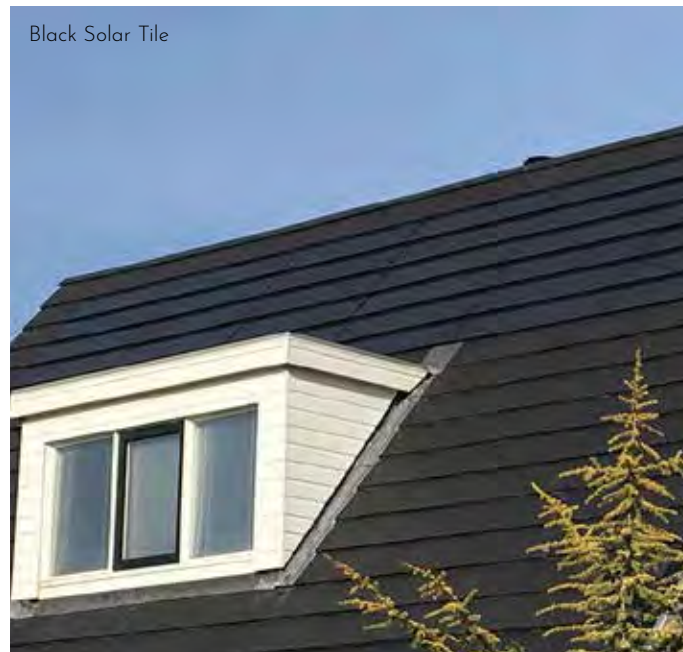
Easy fitting

The solar tiles can be supplied in different widths. The Standard width is 1500mm, but we can also provide a 600mm variant, which allows for a roofscape to optimise its energy potential.

Product Guarantees and Certifications

The Solar Tiles are tested by KIWA and BDA according to the Dutch Building Decree according to NEN 7250: Solar Energy Systems - Integration into Roofs and Facades - Architectural aspects. The Product Warranty is 10 years from the installation date and 25 years on power generation.

*As per European trademark Nr.7287956, filed on 2nd October 2008, the Trademark PLANUM belongs to La Escandella. It is Dachziegelwerke Nelskamp as an authorised licensee of the owner allowed to use the mark PLANUM for its concrete product.



CREASING TILES

FRONT



BACK



Pallet Qty: 1200

Colour: Red

Tile size: 265 x 165 x 14mm Nominal

Weight per tile: 1.1Kg

Weight per Pallet: 1.4 Tonne

Features: Flat tile (no camber) no nibs, no nail holes, mortar key on back.

Uses: Decorative finish to brickwork and stonework or to aid in damp proofing.

Tested and approved to EN 539-2:2013 for Frost Resistance.

Tested and approved to Category 1 BSEN 1304:2013 for impermeability.

Tested and approved to BS EN 538: 1994 for Flexural Strength.



VEHICLE OPTIONS / SERVICE

At RDUK, we are committed to providing a reliable and efficient haulage service to support all your roofing projects. We offer a wide range of vehicles to suit any site and any order size. Whether you need a small, quick delivery or a large, complex haul, we have the right vehicle for the job. Our team is always available to assist with scheduling, tracking, and any other logistical needs. We prioritize clear communication and customer satisfaction at every step of the process.

28T FLATBED ARTIC (NO OFFLOAD)



Without the weight of a crane to carry, these lorries carry our heaviest loads making them the most economic where void or palletized loads need to be delivered.

Max load weight = 29 tonnes
Bed length (approx.) = 12.2m

This vehicle is CrossRail Compliant. For more information please contact us.

28T CURTAIN-SIDED



The 28-tonne curtain-sided lorry features durable, weather-resistant curtains for easy side loading and unloading and a flatbed design for maximum cargo space

Max load weight = 28 tonnes
Bed length (approx.) = 13.6 meters
Maximum vehicle height = 4.5 meters

28T DRAWBAR WITH CRANE OFFLOAD



The draw bar with crane carries more than the rigid vehicle and if required can be split by dropping the trailer to gain access to almost any site. Despite its overall length of 17.5 metres (57'4") it is therefore ideal for very tight sites where the economy of large loads can be maximized, therefore reducing unit cost for the customer.

Max load weight = 28 tonnes
Bed 1 length (approx.) = 6.6m
Bed 2 length (approx.) = 5.64m
Maximum vehicle height = 3.72m
Crane capacity at 6.6m from the lorry (approx.) = 1.62 tonnes

18T RIGID WITH CRANE OFFLOAD



The eight-wheeled rear mount rigid crane carries 18 tonnes and can get into almost any site. The advantage of having a rear-mounted crane means you have the flexibility of where the product can be placed on site.

Max load weight = 18 tonnes
Bed 1 length (approx.) = 8.3m
Maximum vehicle height = 3.66m
Crane capacity at 8.8m from the lorry (approx.) = 1.2 tonnes

6-WHEELER WITH CRANE OFFLOAD



The six-wheeled rear-mounted crane is ideal for smaller loads or tighter access. The advantage of having a rear mounted crane means you have the flexibility of where the product can be placed on site.

Max load weight: 12.5 tonnes
Bed 1 length (approx.) 6.6m
Bed 2 length (approx.) 3.72m
Maximum vehicle height: 3.72m
Crane capacity at 6.6m from the lorry (approx.) 1.62 tonnes

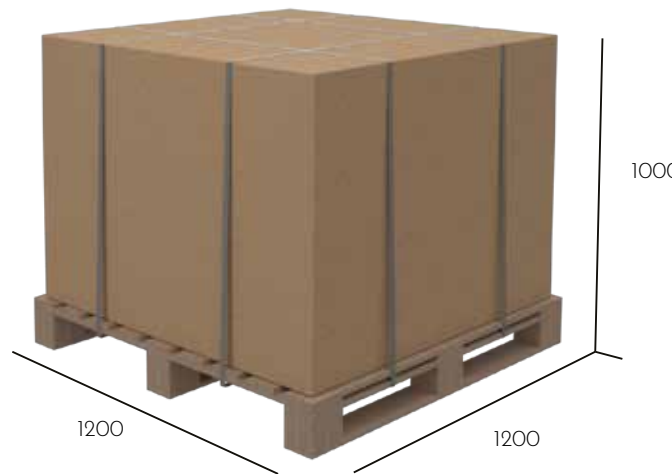
DELIVERY SERVICE

PALLET NETWORK COURIER SERVICE

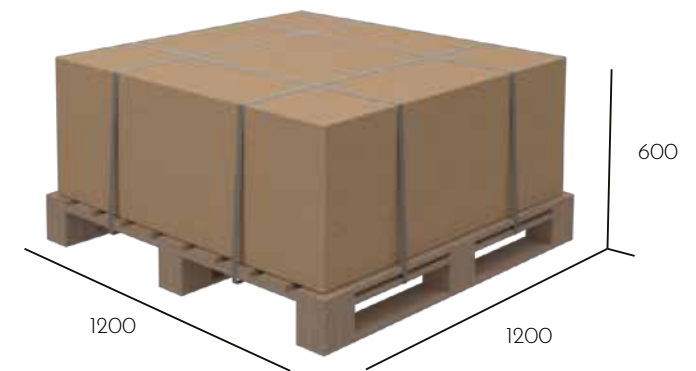
For the smallest of deliveries, we offer a courier service with pump truck and tail lift offload. This service has a 1-tonne weight restriction. Their designated size and weight limitations are as follows:



FULL PALLET: MAX WEIGHT 1250KG



HALF PALLET: MAX WEIGHT 500KG



QUARTER PALLET: MAX WEIGHT 250KG

FREE SAMPLE DELIVERY SERVICE

To ensure that you make an informed decision on your tile choice, we offer a complimentary sample delivery service allowing you to examine the quality and suitability of our products first-hand, ensuring they meet your exact specifications before placing your order.

Having browsed our extensive product range, select the samples you're interested in, and we'll courier them directly to your site or office at no cost.

Enquire today: sales@roofingdistributionuk.com / 01375 397 140

TILE ACCESSORY & FITTINGS INDEX

PAGES 4 - 5: EDILIANS PHALEMPIN 17 X 27 PLAIN TILES

PAGES 6 - 7: EDILIANS STE FOY 17 X 27 CLAY PLAIN TILES

PAGES 8 - 9: EDILIANS CHARTWELL 17 X 27 CLAY PLAIN TILES & EDILIANS CHILWORTH 17 X 27 CLAY PLAIN TILES



Tile and a Half



Eave Top Tile



Bonnet Hip



Universal Valley 45°



Half Round Ridge
Non-Interlocking



Hog's Back Ridge



Right Hand
Independent
Cloaked Verge Tile



Left Hand
Independent
Cloaked Verge Tile



Ornamental Club
Tile Vertical Tile
Assembly

PAGES 10 - 11: EDILIANS 20 X 30 CLAY PLAIN TILES:



Left hand
finishing tile



Eave Top Tile



Bonnet Hip



Half Round Ridge
Non-Interlocking



Third Round Hip
Ridge



Hog's Back Ridge



Right Hand
Independent
Cloaked Verge Tile



Left Hand
Independent
Cloaked Verge Tile



Hog's Back Ridge
End Cap



Half Round Ridge
End Cap

PLEASE CONTACT US FOR A FREE
FIXING SPECIFICATION AND
ESTIMATE FOR YOUR PROJECT:

ENQUIRE TODAY:

sales@roofingdistributionuk.com

01375 397 140

RDUK
ROOFING DISTRIBUTION UK



FREE FIXING
SPECIFICATION

TILE ACCESSORY & FITTINGS INDEX

PAGES 12 - 13: EDILIANS BEAUVOISE CLAY INTERLOCKING PLAIN TILE

PAGES 14 - 15: EDILIAN HP20 INTERLOCKING CLAY TILE



Left Hand Finishing Tile



Right Hand Tile and a Half



Left Hand Tile and a Half



Half Left Hand Cloaked Verge Tile



Half Right Hand Cloaked Verge Tile



Left Hand Cloaked Verge Tile



Right Hand Cloaked Verge Tile



Half Round Interlocking Ridge



Half Round Non-Interlocking Ridge



Third Round non-interlocking hip ridge



Tile Clip, Eaves Clip, Verge Clip, Cut tile Clip & Angular Clip.

PAGES 16 - 17: EDILIAN SINGLE PANNE S

PAGES 18 - 19: EDILIAN DOUBLE PANNE S



Right Hand Cloaked Verge Tile



Left Hand Cloaked Verge



Left Hand Verge Double Roll Tile



Half Round Interlocking Ridge



Half Round Ridge End Piece, Socketed



Half Round Interlocking Hip



Third Round Non-Interlocking Hip ridge



Half Round Non-Interlocking Hip ridge



Tile Clip, Eaves Clip, Verge Clip & Cut tile Clip.

PAGES 20 - 21: EDILIAN PANNE H2 INTERLOCKING CLAY PANTILE



Half Tile



Left Hand Verge Double Roll Tile



Left Hand Cloaked Verge Tile



Right Hand Cloaked Verge Tile



Half Round Interlocking Ridge



Half Round Ridge End Piece, Socketed



Half Round Interlocking Hip



Third Round Non-Interlocking Hip ridge



Half Round Non-Interlocking Hip ridge



Tile Clip, Eaves Clip, Verge Clip & Cut tile Clip.

PAGES 22 - 23: EDILIAN MONOPOLE



Half Tile



Left Hand Cloaked Verge Tile



Right Hand Cloaked Verge Tile



Half Round Interlocking Ridge



Half Round Ridge End Piece, Socketed



Half Round Interlocking Hip



Third Round Non-Interlocking Hip ridge



Half Round Non-Interlocking Hip ridge



Tile Clip, Eaves Clip, Verge Clip & Cut tile Clip.

PAGES 28 - 31: EXMOOR CONCRETE TILE & EXMOOR CONCRETE DUO TILE



Apex Ridge



Left and Right Half Tile (to be cut)

PLEASE CONTACT US FOR A FREE FIXING SPECIFICATION AND ESTIMATE FOR YOUR PROJECT:

ENQUIRE TODAY:

sales@roofingdistributionuk.com

01375 397 140

RDUK
ROOFING DISTRIBUTION UK



FREE FIXING SPECIFICATION

TILE ACCESSORY & FITTINGS INDEX

PAGES 32 - 33: WAVE PROFILE CONCRETE TILE



Apex Ridge

PAGES 34 - 37: PLANUM CONCRETE INTERLOCKING FLAT TILE & PLANUM DUO CONCRETE INTERLOCKING FLAT TILE



PAGES 38 - 39: DOUBLE PANTILE CONCRETE TILE

PAGES 40 - 41: DOUBLE ROMAN CONCRETE TILE



**PLEASE CONTACT US FOR A FREE
FIXING SPECIFICATION AND
ESTIMATE FOR YOUR PROJECT:**

ENQUIRE TODAY:

sales@roofingdistributionuk.com

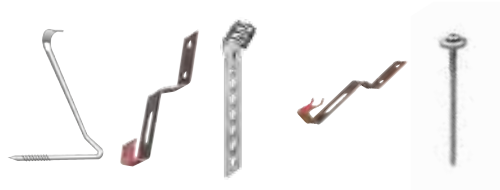
01375 397 140

RDUK
ROOFING DISTRIBUTION UK



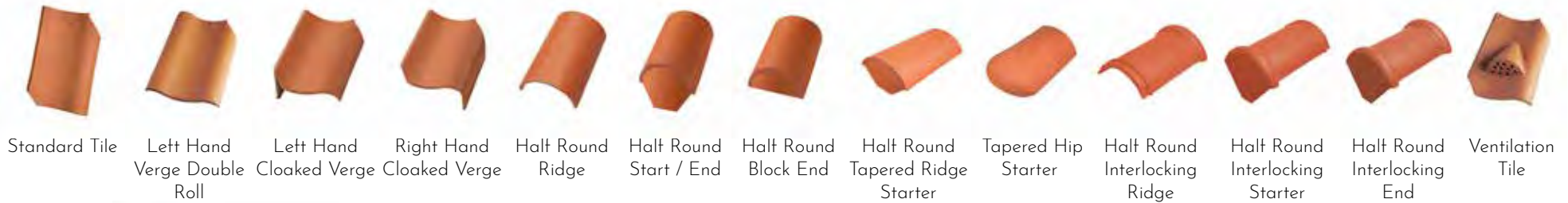
**FREE FIXING
SPECIFICATION**

PAGES 42 - 43: NELSKAMP GIO FLAT DOUBLE INTERLOCKING CLAY TILE



Fixing Clip, Ridge Clip, Universal Eave Clip, Verge Clip & Fixing Screw

PAGES 44 - 45: NELSKAMP WOLDS



Fixing Clip, Tapered Ridge Fixing Clip & Eave Fixing Clip.

PAGES 46 - 47: HERITAGE TILES



TILE ACCESSORY & FITTINGS INDEX

PAGES 48 - 49: SVK FIBRE CEMENT SLATES



Montana Verge Slate Montana Roll Top Ridge Type A Montana Roll Top Ridge Type B Montana Half Round Ridge Montana Nails for Slates Ridge Clips Copper Disc Rivets Slate Hooks Montana Stainless Steel Pin Hooks Montana Ventilation Comb Montana Ventilation Slate

PAGES 50 - 51: GAELIC NATURAL SLATE



Square Rectangle Waben Half Moon Fischechuppen Bullnose 90 Swan 74 Swan Schuppen Spizart

PAGES 52 - 53: ENVIROTILE



Double Slate Half Slate Ridge Cap Gable End Cap Hip Cap Hip End Cap Ridge To Apex Lowline Ventiladed Tile Cowl Vent Ventiladed Eave Bar Ventiladed Ridge Roll Ventiladed Hip Roll Envirolay

PLEASE CONTACT US FOR A FREE FIXING SPECIFICATION AND ESTIMATE FOR YOUR PROJECT:

ENQUIRE TODAY:

sales@roofingdistributionuk.com

01375 397 140



FREE FIXING SPECIFICATION

DISCLAIMER:

Every effort has been made to ensure the accuracy of the design and printing of this brochure. However, it is intended for guidance purposes only. We strongly recommend that customers view samples of roof tiles or slates before making a selection. Please contact your supplier or RDUK for samples. We cannot be held responsible for any manufacturing changes made by our suppliers after the printing of this brochure, as these are beyond our control. If you have any queries, please contact RDUK for assistance.

RDUK

ROOFING DISTRIBUTION UK

www.roofingdistributionuk.com

